



September 2009

Mining History News

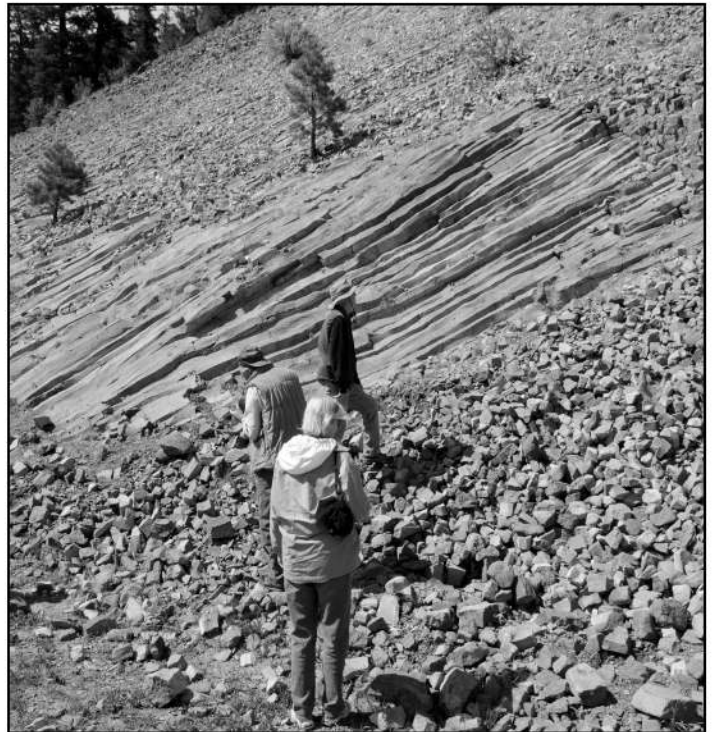
Quarterly Newsletter of the Mining History Association

Creede -- A Grand Event!

“Creede was one of the best MHA meetings ever!!”

This sentiment was expressed many times during our June 2009 MHA conference in Creede, Colorado. Ed Raines and his cast of local organizers did a terrific job with all aspects of the conference. Among the local organizers were: Lonny Rogers, manager of the Creede Community Center; Ricky Brown, manager of the Creede Underground Mining Museum; Jenny Inge, who helped coordinate the event; members of the Creede Historical Society, including Janis Jacobs, its President; Zeke Ward and Charles Downing, who arranged the visit to the Commodore mine area; personnel from the Creede Independent School District; Henry Husselcus, who drove the field trip bus; Ken Wyley and Bob Wunderlich, and all of the people at the Rio Grande Club. On behalf of all the members of the Mining History Association, I would like to extend to all of these people our sincere appreciation and thanks for a job well-done.

A number of us began the experience with a pre-conference geology field trip in the Creede area. Unbeknownst to many (including me - a geologist!), the eastern San Juan Mountains (including Creede) have an extremely complex geological history. Anywhere from 8 to 22 calderas (large craters formed by volcanic explosion or by collapse of a volcanic cone), depending on the latest study, are not only responsible for the spectacular scenery in the area, but also for the economic value of the district. During the day-long trip, we heard



MHA members examine columnar joints on the geology field trip. (Photo courtesy of Karen Vendl)

about *nuee ardente*, or pyroclastic flows, which are currents of hot gas and rock that move at incredible speeds down the flanks of volcanoes.

We also learned about how the vein systems in the Creede district were developed as minerals were deposited along portions of a complex system of faults (grabens) that formed during the volcanic activity that accompanied the formation of the calderas. We saw a natural arch, and examined “columnar jointing” - lots of geology!

At one point during the field trip, we were standing in the “moat” of a caldera, looking at the resurgent dome (a large hill in the center of the moat), with the caldera rim (a rim of mountains)

(Continued on Page 2)

"Creede!..." (Continued from Page 1)

behind us! Imagine standing in a drained Crater Lake, looking at Wizard Island, with the caldera rim behind you! Fascinating!

The annual conference officially began on Thursday with the Welcoming Reception at the Creede Underground Mining Museum, the site of most of the events. Old friends greeted each other, and excitedly discussed the upcoming events. After a very educational series of talks during the day on Friday, we adjourned to the Rio Grande Club in the evening for a reception and the annual Awards Banquet hosted by outgoing president Ron Limbaugh. The Awards ceremony included presentations to a number of extremely talented and qualified recipients. The John M. Townley Award winner for the best 2008 Journal article was Peter L. Siems for his article titled "A History of the Schemnitz (Banska Stiavnica) Silver-Gold Mines." Muriel Sibell Wolle was the posthumous recipient of the Cherry Hunter Award for her contribution to the preservation of mining history through art with her sketches and paintings of mines and ghost towns in Colorado. The Rodman Paul Award for outstanding contributions to the field of mining history was given to Richard Francaviglia. Thomas G. Andrews was presented the 2007-2008 Clark Spence Award for the outstanding book on mining history for *Killing for Coal: America's Deadliest Labor War*.

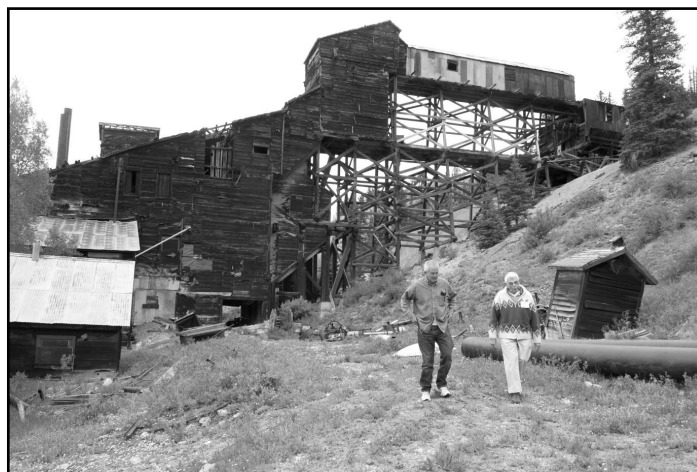
Saturday found MHA members again being entertained and educated with more presentations in the morning and afternoon sessions. After a great luncheon in the Underground Mining Museum, I had the privilege of accepting the Presidential Rock Pick from outgoing President Ron Limbaugh, and addressing the membership with my presentation titled "Treasures from the Miner's Lunchbox." Saturday's activities concluded with an evening session, and an hour-long documentary film.

The Sunday field trip again found some of us touring the area, this time not focusing on the

geology, but rather on the mining history of the district. The tour took us to the fluorspar mine and mill at Wagon Wheel Gap which had much of its original equipment intact. We toured parts of Creede, including the Commodore mine (ably discussed by MHA member Mike Kaas in the last newsletter). The Sunday trip concluded with a visit to the Lake City Mining District, and the location of Capitol City, a ghost town established in 1877 whose founder expected it to surpass Denver and become the capitol of Colorado.

The residents of Creede, in addition to those who helped plan and implement the conference, were extremely friendly and helpful to MHA members who were looking for a good restaurant, or a grocery store, or any of the other multitude of things one looks for as a guest in a community. Congratulations are offered, not only to Ed Raines and his core of local helpers, but also to Ed Hunter for doing a great job with registration, and to all the residents of Creede, Colorado for hosting an exciting and successful Mining History Association annual conference.

Karen Vendl
La Grange Park, IL
 mkvendl@earthlink.net



Duane Smith and Ed Hunter check out the Colorado Fuel and Iron fluorspar mine and mill at Wagon Wheel Gap on the Sunday field trip. (Photo courtesy of Karen Vendl)

Funded Graduate Assistantships to Study Canadian Mining Now Available

Arn Keeling, Department of Geography, John Sandlos, Department of History, and Yolanda Wiersma, Department of Biology, Memorial University of Newfoundland, are seeking two graduate students at the MA level to work on the project, "Abandoned Mines in Northern Canada: Historical Consequences and Mitigation of Current Impacts." Funding is available for these positions through Memorial University and the Social Sciences and Humanities Research Council. The following positions are available:

Master's degree (MA) and/or PhD in History

In addition to completing required courses for the History MA or PhD, the student will develop a major paper or dissertation research project involving primary research on the history of mining in northern Canada, particularly the historical economic impact of mining in the region.

Two Year Master's (MA or M.Sc.) in Geography

1. Using facilities in Dr. Yolanda Wiersma's Landscape Ecology and Spatial Analysis (LESA) Lab in the Biology Department at Memorial University of Newfoundland, the graduate student will use Environmental Systems Research Institute (ESRI) ArcInfo GIS software to analyze landscape and ecological changes in the regions surrounding one or two of our case study communities.

2. Under the supervision of Dr. Keeling, one MA position is available to study northern Canadian mining development from an environmental history/cultural geography perspective. This position includes opportunities for conducting fieldwork and community-based research in northern communities.

Comprehensive funding packages are available, with opportunities to augment the amount through scholarships or Graduate Assistantships. These positions offer students the opportunity to work with an interdisciplinary team of researchers while pursuing their individual research interests and goals.

Memorial University of Newfoundland is one of Canada's leading comprehensive research institutions. The university is located in St. John's, a unique and culturally vibrant city set within stunning natural beauty.

For more information about the project, see:

<http://www.mun.ca/geog/research/mining.php>

Interested applicants should contact:

Dr. Arn Keeling (akeeling@mun.ca) or Dr. John Sandlos (jsandlos@mun.ca)

Future MHA Meetings

2010 Meeting
June 10-13
Silver City, NM

2011 Meeting
June 1-5
Dillon, MT

2012 Meeting
June 7-10
Prescott, AZ

Historic Wyoming Gold Mine and Mill Complex Seeks Volunteers, Equipment, and Visitors

The historic Carissa Mine was the first lode claim located in Wyoming's Shoshonie District in June of 1867. Erratically intermingled high and low grade ore frustrated all attempts to operate it at a consistent profit over its 90 year production life. The 200+ acre mine and mill complex consisting of 9 historic structures last produced gold in 1954 and swung back and forth between private owners repeatedly in recent decades. In 2003, the mine was offered for sale to the people of the State of Wyoming by the owner. It is now preserved as part of South Pass City State Historic Site.

The Abandoned Mine Lands Division of the Wyoming Department of Environmental Quality recently addressed chemical, structural, and mine hazards; sensibly mitigating them, while bearing historic preservation in mind. This spring, the State Legislature and Governor approved additional funding to help provide for increased safe public access to the preserved mine and mill features. Additionally, funding has been dedicated to replace missing pieces of milling equipment and restore the hoist. Preliminary surface tours of the hoist and mill buildings have been a ringing success with the public. The site is managed for the public benefit by Wyoming State Parks & Historic Sites.

Current Needs: According to an inventory of the Carissa taken in 1953, some of the central pieces of equipment now missing include the following:

- 5'x5' Colorado Iron Works ball mill**
- 13' x 36" Akins classifier**
- 12"x 18" Denver Equipment Company duplex mineral jig**
- #6 Wilfley concentrating table**

For historical accuracy, pieces of equipment to be considered for re-equipping the mill should be as close to the originals in terms of manufacture, dimension, etc. The culmination of the project will be a mill with a level of function sufficient to educate and inform visitors in the science and technology of one of the West's keystone industries: mining.

For additional information, contact Jon Lane, curator: (307) 332-3684, jlanel@state.wy.us

South Pass City State Historic Site
125 South Pass Avenue
South Pass City, WY 82520

www.southpasscity.com

Contribute to Your MHA Newsletter!

Do you have a piece of research that is interesting, but much too short for the *Mining History Journal*? News about an upcoming conference or event related to mining history? Information about a mining museum, or a tip about a "hidden gem" of an archive? Consider sending it to the *Mining History News*! We are always looking for information of interest to our fellow members.

Contact Newsletter Editor Eric Nystrom at eric.nystrom@rit.edu for further details.

Call for Presentations

21st Annual Mining History Association Conference

**June 10-13, 2010
Silver City, New Mexico**

The program sessions chair Chris Huggard invites proposals for individual presentations or complete sessions (including chair) on any topic or aspect of mining history. Sessions normally include three papers of twenty minutes each. There are no temporal or geographic limits.

Proposals should include title of presentation, an abstract (not to exceed one page) for each presentation, plus biographical information about each presenter, including mailing/email address. Please note, speakers must register for the conference in order to give their presentations. Please send the written proposals to the program sessions committee chair by November 30, 2009. Submission by email attachment is preferred.

Chris Huggard, Program Chair
523 N. Willow Ave.
Fayetteville, AR 72701
chuggard@nwacc.edu

Sterling Hill Mine Model Located

L. Mike Kaas

Those participating in the 2005 Annual Meeting field trip and the excellent tour of the Sterling Hill Mine in Ogdensburg, NJ, may remember seeing portions of a mine model composed of cross-sections of the orebody on vertical sheets of glass. When I worked for the New Jersey Zinc Company at the mine in 1963, a quite different model was used in the Engineering Department to provide a 3-D visualization of the deposit geology and the mine workings. It was approximately 3 feet on a side and composed of horizontal sheets of glass containing maps of each level drawn at a scale of 1 in. = 100 ft. This model was not at the mine when it was converted to a museum in the 1990's.

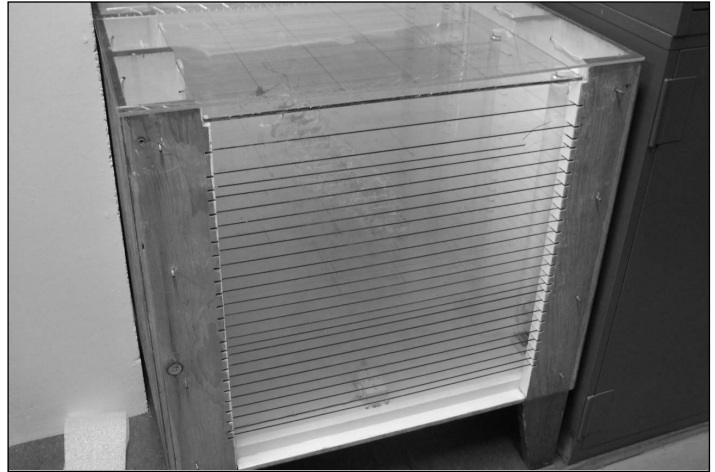
I recently picked up the trail of the missing model and eventually found that it had been donated to the New Jersey State Museum in Trenton before mine closure. Thanks to the help of Rod Pellegrini, Museum Registrar in the Natural History Bureau, I was able to see the model and take some photographs of it. (See photos to the right.) Although it is not currently on display, it is being well cared for by the Museum.

Those interested in New Jersey's long history (1700s to 1986) of underground iron, copper, and zinc mining will be glad to know that the State Geological Survey has placed its Map Archive of Abandoned Mines on-line for free downloads.

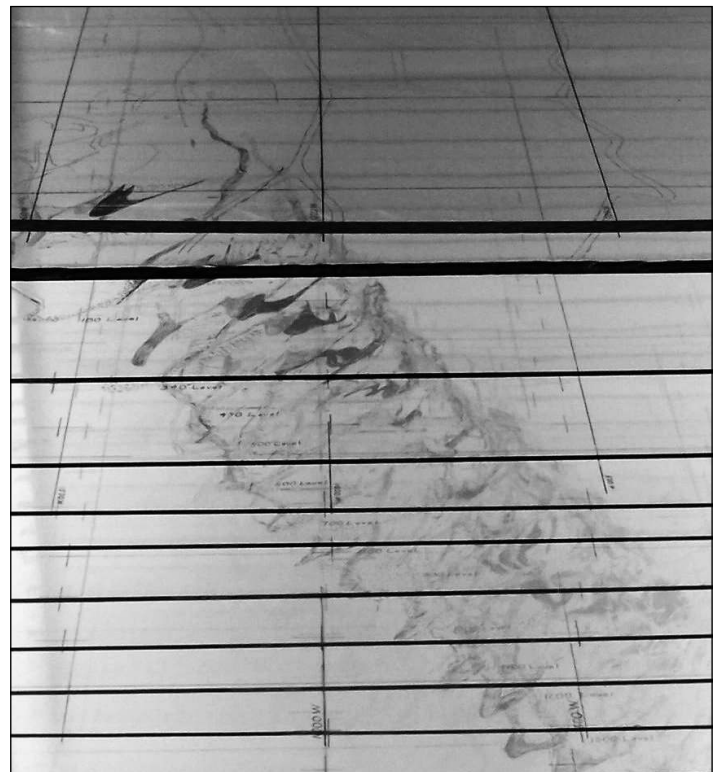
The Index to the mines can be accessed at:
<http://www.state.nj.us/dep/njgs/enviroed/minemaps.htm>

The maps of the Sterling Hill Mine at the same scale used in the mine model can be found at:
http://www.state.nj.us/dep/njgs/enviroed/minemaps/Sterling%20Hill_mine_maps.pdf

This file also contains a more recent, computer generated 3-D drawing of the mine's surface and underground workings.



The glass-plate mine model of Sterling Hill, now in the care of the New Jersey State Museum, with its protective side cover removed. (Photo courtesy of L. Mike Kaas)



Detail of the model, showing orebody and mine workings. (Photo courtesy of L. Mike Kaas)

MHA Secretary Needed

The Mining History Association is searching for a new Secretary. Dawn Bunyak, who has served our organization faithfully since 2004, is stepping down. Thank you, Dawn, for your service to the Association.

Dawn notes that the bylaws describe the Secretary's duties as follows:

"The Secretary shall:

- (a) keep the minutes of the proceedings of the Council and the annual meetings of the Association in one or more books provided for that purpose
- (b) see that all notices are duly given in accordance with the provisions of these By-Laws or as required by law
- (c) be custodian of the Association records and of the Seal of the Association and see that the Seal of the Association under its Seal is duly authorized
- (d) keep and maintain current names and addresses of each member of the Association as provided by the membership chairman
- (e) sign, with the President or Vice President, documents or instruments which require the signature of the Secretary of the Association and which have been authorized by resolution of the Council or vote of the annual meeting of the Association
- (f) have general charge of the minute books of the Association, and
- (g) in general, perform all duties as from time to time may be assigned to him or her by the President or by the Council.

In addition, annual election ballots forwarded by the membership chair from the organization's mailbox are counted by the Secretary who will inform the President of the official tally. The newsletter editor is also notified of the election results to print in the March newsletter."

The Mining History Association depends on volunteers like you to do the work of the society. If you are interested in serving as the MHA Secretary, please contact President Karen Vendl, mkvendl@earthlink.net

Mining History Association
P.O. Box 552
Sedalia, CO 80135

First Class Mail

Upcoming Events

10th Meeting of Historians of Latin American Mining

November 4-6, 2009
San Luis Potosí, México

21st Annual Mining History Association Conference

June 10-13, 2010
Silver City, NM
<http://www.mininghistoryassociation.org>

50th Annual Western History Association Conference

October 13-16, 2010
Incline Village (Lake Tahoe), NV
<http://www.westernhistoryassociation.org>

The *Mining History News* is published quarterly by the Mining History Association. It is sent to MHA members who also receive the annual *Mining History Journal*. MHA is an organization of individuals interested in the history of mining and metallurgy. Submissions for the newsletter are encouraged and should be sent to Eric Nystrom at the MHA address or by email: eric.nystrom@rit.edu.

Deadlines: March issue: February 15
 June issue: May 15
 September issue: August 15
 December issue: November 15

Change of Address: Please send all address changes to Diane Dudley, Membership Chair, at:

Mining History Association
P.O. Box 552
Sedalia, CO 80135
www.mininghistoryassociation.org