

MINING HISTORY NEWS

Volume 8 · April 1997 · Number 1 & 2

MHA in Michigan's Copper Country

Don't miss a great opportunity to visit Michigan's fabulous Copper Country and tour one of the nation's premier mining districts. The Eighth Annual Mining History Association Conference will meet in Houghton, Michigan, June 5-8 and we're putting the finishing touches on what will surely be an interesting meeting.

Houghton is in the center of the Keweenaw Peninsula, a mineral-rich piece of Michigan's Upper Peninsula that juts forty miles into the south shore of Lake Superior. Natural elements, including timber, low rolling hills, the big lake, as well as countless streams and inland lakes, combine to make this one of the nation's overlooked gems. Those attending the conference may wish to plan a few extra days to enjoy some fishing, camping, touring, or even a visit to Isle Royale National Park. For information about the park contact Superintendent, 800 E. Lakeshore Drive, Houghton, MI 49931.

Michigan's copper mining legacy dates to the prehistoric period. Early Jesuit missions and federal explorations of the upper lakes region helped to spread rumors of mineral riches, but it wasn't until Douglass Houghton's geological survey of 1840 that the copper deposits were described in any scientific detail.

During the course of the following century and a half, companies like Quincy, Tamarack, and Calumet & Hecla would rise to worldwide

prominence, lining the pockets of many families whose capital would prove vital to development of western mines. Having only abandoned the last of its native copper mines in the late 1960's, the region contains a surprising range of sites and museums for the modern tourist.

Conference attendees interested in reading about the copper country may want to dip into the following:

Larry Lankton's *Cradle to Grave: Life, and Work and Death at the Lake Superior Copper Mines* (New York: Oxford University Press, 1991) for a clearer understanding of Copper Country mining and social history. Lankton, MTU professor and local authority on the region's history, should have a new book (*Beyond the Boundaries*) available at the conference and will be the featured speaker at the Friday awards banquet.

Biographies of figures central to the discovery and early development of the Keweenaw district can be found in David Krause's *The Making of a Mining District: Keweenaw Native Copper, 1500-1870* (Detroit: Wayne State University Press 1992).

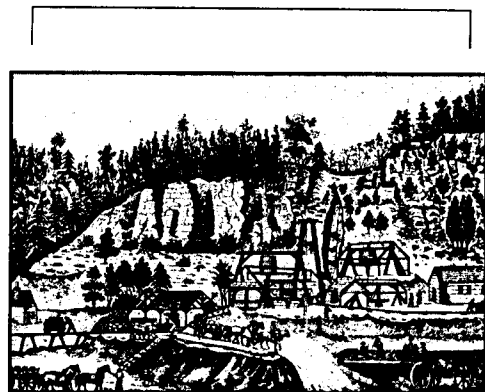
Other out-of-print titles worth tracking down include William Gates' *Michigan Copper and Boston Dollars* and an illustrated history of the Quincy Mining Company, *Old Reliable*, by Lankton and Charles Hyde (Hancock: Quincy Mine Hoist Association, 1982).

A more exhaustive list of sources is available from Erik Nordberg at (906) 487-2505 or via e-mail at copper@mtu.edu.

Hotel

The conference hotel is the Best Western-Franklin Square Inn, which has secured a conference rate of \$59.00 per night. The Franklin Square Inn is located in downtown Houghton, a short walk from the Michigan Tech campus. You may reach them for reservations toll free at 1-800-528-1234 or directly at 906-487-1700. Please indicate that you are attending the Mining History Conference. The hotel has a swimming pool, a restaurant and lounge overlooking Portage Lake, and also offers luxury suites at an additional cost.

Houghton is the site of Keweenaw National Historical Park, one of the newest units in the National Park system. Though not an up-and-running park (they are in the general management planning stages), information about the park is available from the Superintendent at P.O. Box 471, Calumet, MI 49913.



Houghton Conference

The Houghton conference will follow the general format of earlier MHA conferences. Tours of several sites will assist in understanding and exploring the region's history. The centerpiece will be the Quincy Mine in Hancock and our half-day visit will include an underground tour, examination of their surviving No. 2 shaft-rockhouse and Nordberg hoist, the world's largest steam-powered mine hoist designed to service the mine's 6,000 foot vertical depths. The Quincy tour will include a pasty lunch and an opportunity to try your luck at a hand-drilling demonstration.

The program will also include a joint opening reception between the Archives and Seaman Mineral Museum at Michigan Technological University, with opportunities to sample their extensive local collections. Several area museums offer varying perspectives on copper mining in the region and an optional all-day tour north Sunday June 8 along the Keweenaw Peninsula will take in the mill and smelter towns of Torch Lake, the historic planned community of Calumet and the early mining settlements at Cliff, Central, Delaware and Copper Harbor.

Jane Nordberg has also arranged an alternate Saturday tour for MHA widows and widowers; the details are still in the works, but she promises the tour will not include a single mine. Details of tours and sessions are included in the conference program. Be sure to make your plans now for June 5-8!

Traveling to the Copper Country

There are a number of ways to get to Houghton. Houghton County Memorial Airport is the closest airport, located about 5 miles north of the twin cities of Houghton and Hancock. Neil's Cab Service can be arranged for transport into Houghton for about \$7.00 (906-482-5515). Please arrange at least two days in advance of your trip. Northwest Mesaba Airlink flies into

Houghton County with a total of six arrivals and departures daily from Minneapolis and Detroit. There is a slightly shortened schedule on Sundays. If you are planning to rent a car and do some touring in the area, it may be cheaper to fly into Marquette, Michigan, a two-hour drive east of Houghton. Marquette Airport is serviced by Northwest Mesaba Airlink to Minneapolis and Detroit, and by United Express to Chicago.

Marquette Airport is serviced by National Car Rental (1-800-227-7368) and Hertz (1-800-654-3131). National also has a desk at the Houghton County Airport and Avis's Hancock office (1-800-831-2847) can also make cars available for airport connections.

Travelers are reminded that Houghton and Marquette are smaller cities and may have limited availability for rental cars. You are advised to make rental car reservations early and confirm specific arrangements prior to arrival.

Information

Houghton and Hancock are situated on opposite sides of Portage Lake, a thin inland waterway cutting through the Keweenaw Peninsula. Copper Country winters are known for their snowfall (last year they received 350") and the summers are mild, with northerly breezes off Lake Superior. Additional information about Houghton, the surrounding area, other accommodations and dining can be found in a visitors packet available from the Keweenaw Peninsula Chamber of Commerce (1-800-338-7982). Those planning extended tours of the region may wish to contact the Upper Peninsula Travel & Recreation Association (1-800-562-7134) for a copy of their "UP Travel Planner."

Ho for the Caledonia!

A post-conference field trip into the Caledonia Mine near Mass and Greenland, Michigan has been arranged with Richard Whiteman of Red Metal Minerals for Monday, June 9. This is

currently a working specimen mine, but has a rich history (since opening in 1863) as a copper mine. A choice of two trips will be offered: The first is to the Knowlton workings, and is only for those in good physical condition (as it involves climbing several steep stopes and considerable distance through old drifts). It is an excellent opportunity to obtain photos of old ore cars and wood rail from the turn of the century. For safety reasons, this trip will be limited to eight persons.

The second trip will be to the Nebraska workings. This area bears excellent evidences of hand steel drilling. For the mineral collectors, there is also the possibility of finding nice specimens of datolite (for which the Caledonia Mine is famous), copper and, for the lucky, silver. Approximately 20 people can be accommodated on this trip.

The cost for the Knowlton trip is \$50, and for the Nebraska trip \$30. A pasty lunch (one of the best in the U.P.) is \$5. Both trips will be about 4 hours in length and will start at 9:00 A.M. The mine temperature is about 46° F. Knee-high boots (the mine is wet) are required for the Knowlton and strongly recommended for the Nebraska. Hard hats and mine lamps will be provided by the mine. Sign-up will be at conference registration on a first come basis and maps to the mine will be provided. Questions? Call - Lynn Langenfeld at work: 608-252-4192 or home: 608-274-8242.

The Mining History Association Newsletter

Denver, Colorado

Distributed to association members; membership is open to all interested in the history of mining. Dues are \$25 per year. Please send dues to MHA, Post Office Box 150300, Denver, Colorado 80215.

Submissions for publication in the newsletter are welcome. Write to Robert L. Spude, Editor.

**Eighth Annual Conference - Mining History Association
June 5-8, 1997, Houghton, Michigan**

June 5, Thursday

- 2:30 - 4:30 Registration, Franklin Square Inn
5:00 - 6:45 Welcoming Reception and Open House held concurrently at the MTU Archives and Copper Country Historical Collections and the Seaman Mineral Museum, MTU Campus
7:00 Opening Session at the ROTC Graduate Center, MTU Campus
Speaker: Tom Rosemeyer, "Great Mines of the Copper Country"

June 6, Friday

- 8:00 - 5:00 Registration, Franklin Square Inn
8:30 - 1:00 Tour of Quincy Mine, Hancock, including pasty lunch
1:30 - 2:55 Session 1, Franklin Square Inn, "Nevada and the West" Chair: *Duane Smith*
Robert Kendall, "Deep Enough! The Pitfalls and Perils of Deep Mining on the Comstock Lode"
Ronald Reno, "Smelting and the Problem of Fuel in the Eureka District, Nevada"
Randall Rohe, "Chinese Small-Scale Mining in the American West 1848-1900"
3:00 - 3:40 Session 2, Franklin Square Inn, "Arizona and Colorado" Chair: *Ed Hunter*;
Lew Orrell, "Kentucky Camp Placer Mining"
Karen and Mark Vendl, "The Sweet Home Mine - Alma, Colorado"
3:45 - 4:30 Session 3, Franklin Square Inn, "Lead Mining" Chair: *Mark Langenfeld*;
John A. Campbell and John M. Kelly, "A Mining History of Jo Davies County, Illinois"
Philip Millhouse, "Native American Lead Mining in the Upper Mississippi Valley"
4:45 - 5:30 Mining History Association Business Meeting, Franklin Square Inn
6:00 - 7:00 Reception at the Franklin Square Inn, sponsored by Copper Range
7:00 Awards Banquet at the Franklin Square Inn
Speaker: Larry Lankton, Michigan Technological University, "Life on the Copper Mining Frontier"

June 7, Saturday

- 8:00 - 10:00 Registration, Franklin Square Inn
8:30 - 9:55 Session 4, Franklin Square Inn, "Copper Mining" Chair: *Karen Vendl*;
David J. Krause, "What Good is Native Copper, Anyway?"
Kenneth Kutz, "Red Gold"
David Landon, "Ohio Trap Rock Mine, 1848-1858"
Frank Stone, "America's First Miners: Indians and Copper Mining"
10:00 - 11:25 Session 5, Franklin Square Inn, "Urbanization, Women & Mining" Chair: *Bob Trennert*;
Nancy Beth Fisher, "A House is Not a Home"
Lynn Bjorkman & Arnold Alanen, "Shaping the Land, Modeling Communities: Gwinn and Calumet, MI"
Richard Francaviglia, "In Her Image: Some Reflections on Gender and Power in Mining History"
Sandra Battaglini, "Don't Go Down in the Mines, Mamma: Women in Production at Inco During WWII"
10:00 - 4:00 Jane's Magical Mystery Tour for Mining Widows and Widowers: A little of this, a little of that, but no mines, guaranteed! (*space limited*)
11:45 - 1:15 Presidential Luncheon, Franklin Square Inn, Speaker: Bob Trennert, President, Mining History Association
1:30 - 2:55 Session 6, Franklin Square Inn, "Mining Potpourri" Chair: *Mark Vendl*;
Theodore Hull, "Electronic Records in the National Archives Relevant to Research on Mining"
Ron Limbaugh, "Education vs. Experience: Mining Engineers, Geologists, & Arrogance of Professionalism"
Homer Milford and J. Scott Altenbach, "Hand Drilling: The Record from Western Mines"
3:00 - 4:30 Session 7, Franklin Square Inn, "Ontario" Chair: *Bob Spude*;
Guy Gaudreau, "International Nickel Company and Noranda Mines' Workforce"
Karey Reilly, "Italian Workers at the International Nickel Company, Copper Cliff, Ontario"
Patrick Chapin, "Northwestern Ontario Gold Mining"

June 8, Sunday

- 8:30 - 8:00 Tour of the Keweenaw Peninsula: Meet at the Franklin Square Inn for all-day bus tour featuring a walking tour of Calumet and lunch in Calumet (provided), stops at other historical copper mining sites and dinner in Copper Harbor (on your own). Return to Houghton by 8:00 p.m.

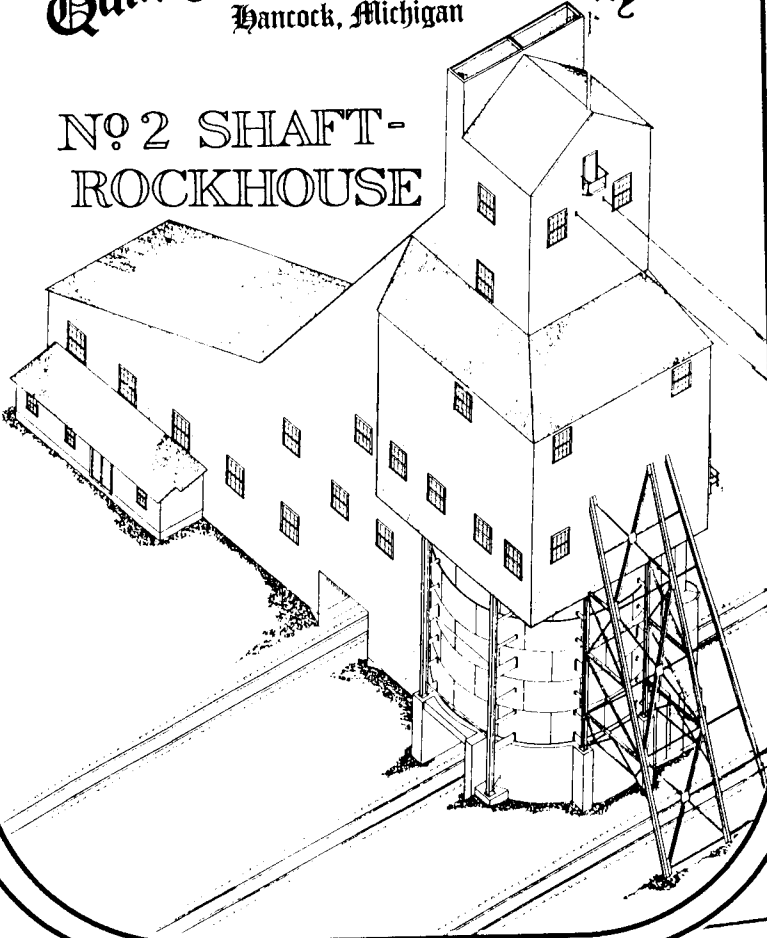
incorporated

in 1848

Quincy Mining Company

Hancock, Michigan

Nº 2 SHAFT-ROCKHOUSE



Michigan's

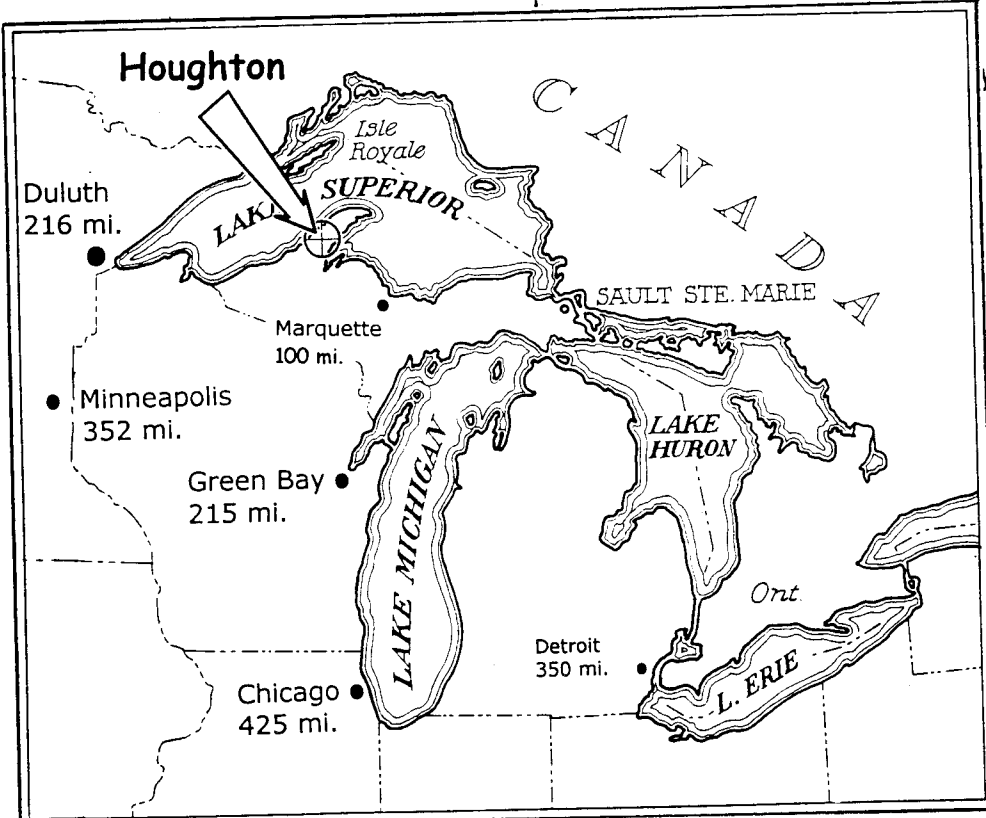
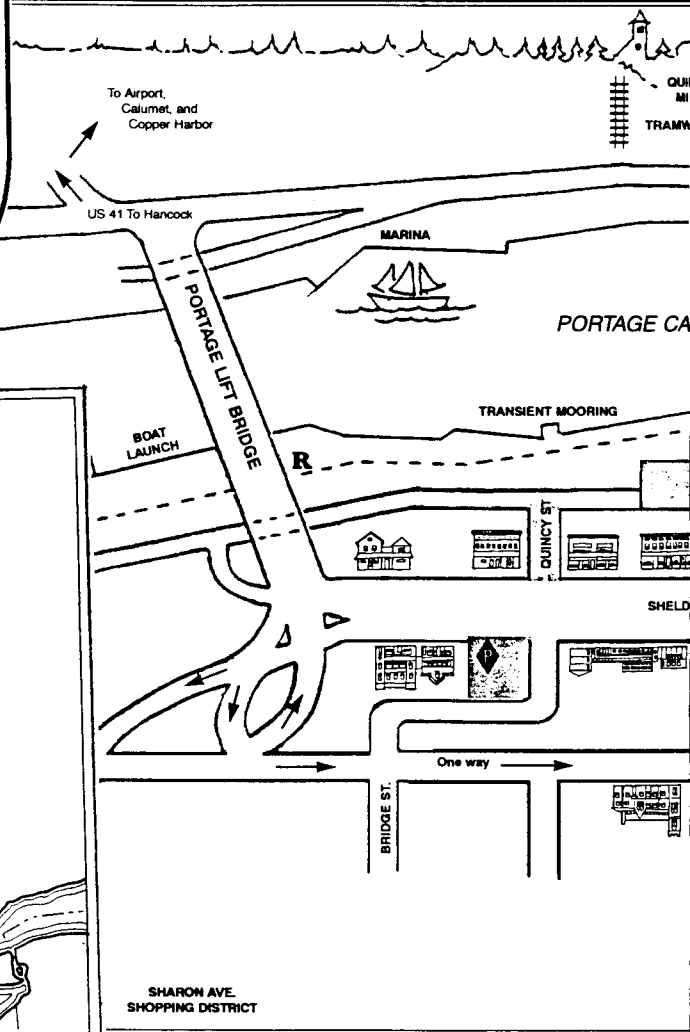
COPPER CO

Mining History Assn

Eighth Annual Meet

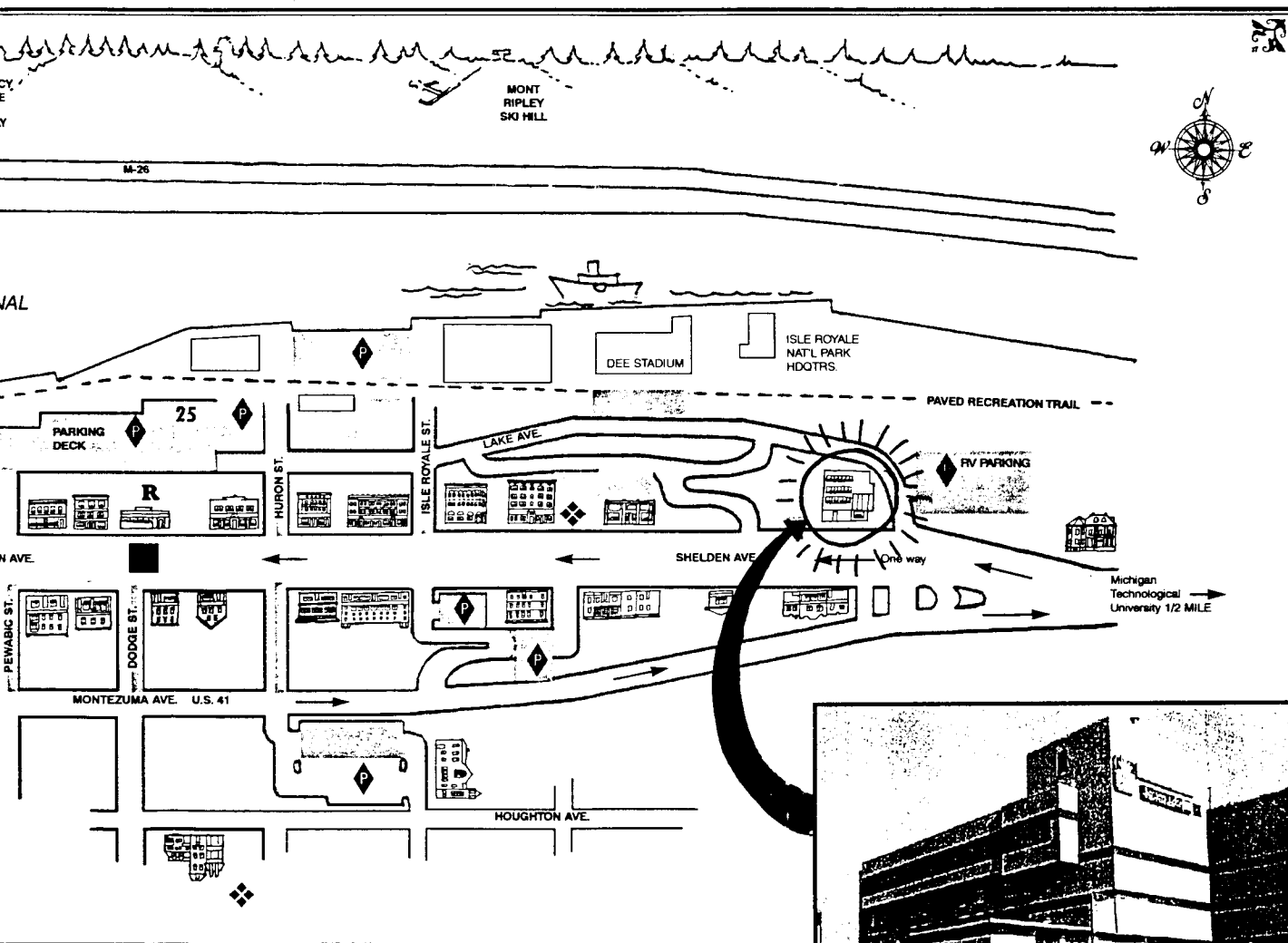
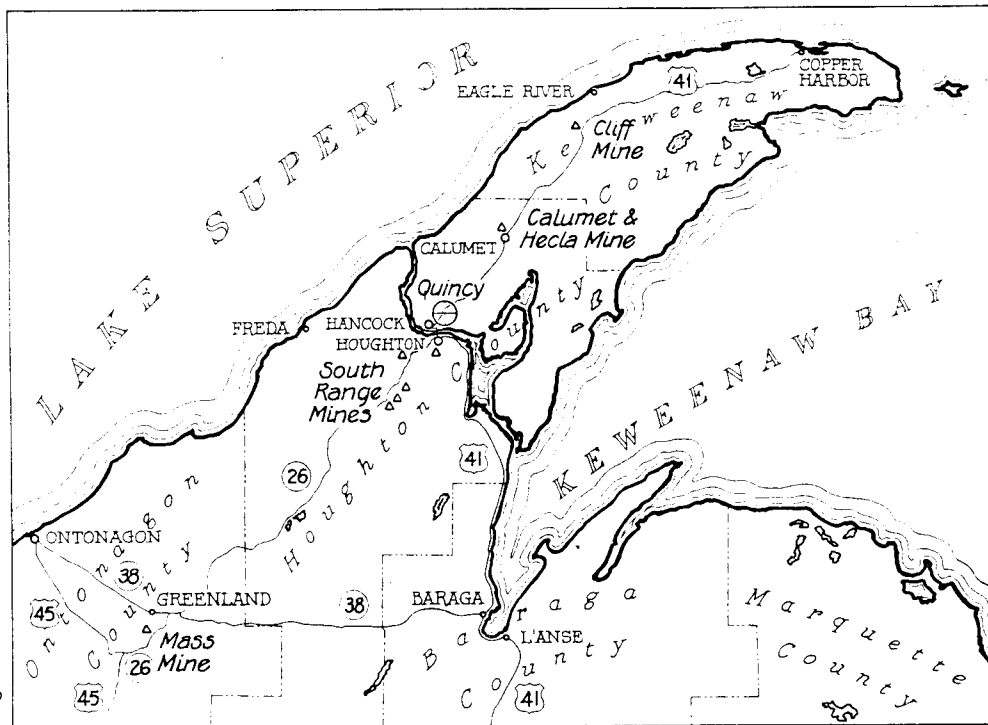
June 5-8, 1997

Houghton, Michigan

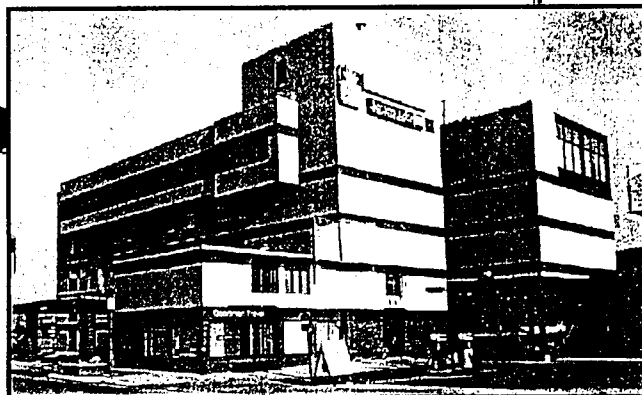


COUNTRY

Association
ing



Franklin Square Inn



Recent publications on the history of mining

The following list contains recent articles, chapters and dissertations that relate to the history of mining. It includes all types of mining in North America. Thanks to those who sent in suggestions for this installment. We welcome citations for inclusion in the next update.

compiled by Lysa Wegman-French

- Amundson, Michael A. "Uncle Sam and the Yellowcake Towns: The Effects of Federal Policy on Four Uranium Mining Communities, 1943-1988." Ph.D. diss., University of Nebraska, 1996.
- Ball, Larry D. "A Contractor's Cussedness: Politics, Labor, Law, and the Keets Mine Incident of 1877." *South Dakota History* 26, nos. 2 & 3 (Summer/Fall 1996): 93-120.
- Bean, Kolleen M. "Settlement Stages and Frontier Systems: The Historic American Settlement of New Mexico's Black Range Region." Ph.D. diss., State University of New York at Buffalo, 1996. [Mining frontier in the southwestern New Mexican homeland of the Chiricahua Apache.]
- Buckley, Geoffrey L., and Betsy Burstein. "When Coal was King: The Consolidation Coal Company's Maryland Division Photographs." *Maryland Historical Magazine* 91, no. 3 (Fall 1996): 298-310.
- Chapin, Patrick Robert. "Northwestern Ontario Gold Mining, 1880-1902: The Gold Boom That Didn't Pan Out." M.A. thesis, Lakehead University, Canada, 1996.
- Chenoweth, William L. "The Uranium Industry in the Paradox Basin." In *Geology and resources of the Paradox Basin: Utah Geological Association Guidebook* 25, ed. A.C. Huffman, Jr., W.R. Lund, and L.H. Godwin, 95-105. n.p.: Utah Geological Association, 1996.
- Clements, Eric L. "Bust and Bust in the Mining West." *Journal of the West* 35, no. 4 (October 1996): 40-53.
- Cook, Glenn S. "The Economic Impact of Mining on the Community of Elko, Nevada." *Journal of the West* 35, no. 4 (October 1996): 54-57.
- Dempsey, Stanley. "Mining Law Update." *Mining Engineering* 49, no. 2 (February 1997): 42-44. [Includes an overview of major moments in the history of mining laws in the West.]
- Dorich, Thomas J. "A Socioeconomic Portrait of Jerome, Arizona, 1877-1935." Ph.D. diss., Arizona State University, 1996.
- Draper, Alan. "The New Southern Labor History Revisited: The Success of the Mine, Mill, and Smelter Workers Union in Birmingham, 1934-1938." *Journal of Southern History* 62 (February 1996): 87-108.
- Dykman, Judy. "Utah's Silver Queen and the 'Era of the Great Splurge.'" *Utah Historical Quarterly* 64 (Winter 1996): 4-33. [Susie Albion Engalitcheff, mining heiress.]
- Finn, Janet Leigh. "Mining Community: The Cultural Politics of Copper, Class and Gender in Butte, Montana, USA and Chuquicamata." Ph.D. diss., University of Michigan, 1995.
- Forest, Suzanne Sims. "A Trail of Tangled Titles: Mining, Land Speculation, and the Dismemberment of the San Antonio de las Huertas Land Grant." *New Mexico Historical Review* 71, no. 4 (October 1996): 361-393.
- Gearhart, Dona G. "'Surely a Wench Can Choose Her Own Work!': Women Coal Miners in Paonia, Colorado, 1976-1987." Ph.D. diss., University of Nevada, Las Vegas, 1996.
- Harris, Shawn Curtis. "The Gloryhole Days of California's United States Senator George Hearst." M.A. thesis, California State University, Dominguez Hills, 1995.
- Herr, Elizabeth and Jennifer Mayes. "Women and Economic Opportunity in Western Mining Towns in the Late 19th Century: The Case of Leadville, Colorado." *Essays in Economic & Business History* 14 (1996): 409-423.
- Hofsommer, Don L. "Ore Docks and Train: The Great Northern Railway and the Mesabi Range." *Railroad History* 174 (Spring 1996): 5-25.
- Horton, Sherry. "Moses Splawn." *Idaho Yesterdays* 40, no. 1 (Spring 1996): 26-33. [A member of the party that discovered gold in the Boise Basin, 1862.]
- Hovis, Logan and Jeremy Mout. "Miners, Engineers, and the Transformation of Work in the Western Mining Industry, 1880-1930." *Technology and Culture* 37, no. 3 (July 1996): 429-456.
- Huggard, Christopher J. "Reading the Landscape: Phelps Dodge's Tyrone, New Mexico, in Time and Space." *Journal of the West* 35, no. 4 (October 1996): 29-39.
- Hughes, Charles E. "Progressive Reform in the Rocky Mountain West: Loca Citizens vs. Big Business in the Smelter Cases of Salt Lake County, 1904 and 1906." *Journal of the West* 35, no. 4 (October 1996): 18-28.

- Jensen, Katherine, and Audie Blevins. "Gambling on the Lure of Historic Preservation: Community Transformation in Rocky Mountain Mining Towns." *Journal of the Community Development Society* 26, no. 1(1995): 71-92.
- Johnsson, Harald (Johnny) B., III. "Two Historic Metal Mines in Maryland." [The Choate chromium mine and the Mineral Hill copper and iron mine.] In *Studies in Maryland Geology: In Commemoration of the Centennial of the Maryland Geological Survey*, Special Publication No. 3, ed. David K. Brezinski and James P. Reger, 71-86. State of Maryland, Department of Natural Resources, Maryland Geological Survey, 1996.
- Kenny, Kevin. "The Molly Maguires in Popular Culture." *Journal of American Ethnic History* 14, no. 4 (Summer 1996): 27-46.
- Letwin, Daniel. "Interracial Unionism, Gender, and 'Social Equality' in the Alabama Coalfields, 1878-1908." *Journal of Southern History* 61, no. 3 (1995): 519-554.
- McClain, Charles J. "California's First Anti-Chinese Laws." *Chinese America: History and Perspectives* (1995): 87-155.
- Mouat, Jeremy. "The Development of the Flotation Process: Technological Change and the Genesis of Modern Mining, 1898-1911." *Australian Economic History Review* 36, no. 1 (March 1996): 3-31.
- Naske, Claus-M. "Mining Coal on the Meade River, Alaska." *Pacific Northwest Quarterly* 88, no. 1 (Winter 1996/97): 3-12.
- Nemanic, Mary Lou. "The Fourth of July on the Minnesota Iron Range: Small Town America and Working Class Nationalism, 1892-1992." Ph.D. diss., University of Minnesota, 1996.
- Piatt, Michael H. "Hauling Freight Into the 20th Century by Jerk Line." *Journal of the West* 36, no. 1 (January 1997): 82-91. [The subject is linked to mining since heavy wagon freighting brought mining machinery and supplies to towns not served by railroads.]
- Reno, Ronald Lynn. "Fuel for the Frontier: Industrial Archaeology of Charcoal Production on the Eureka Mining District, Nevada, 1862-1891." Ph.D. diss., University of Nevada, Reno, 1996. [Relation to the smelting industry.]
- Ricketts, Elizabeth Cocke. "'Our Battle for Industrial Freedom': Radical Politics in the Coal Fields of Central Pennsylvania, 1916-1926." Ph.D. diss., Emory University, 1996. [United Mine Workers of America.]
- Rohe, Randall. "Chinese River Mining in the West." *Montana* 46, no. 3 (Autumn 1996): 14-29.
- Shearer, Bruce. "Piece-rates, Principal-Agent Models, and Productivity Profiles: Parametric and Semi-Parametric Evidence from Payroll Records." *The Journal of Human Resources* 31 (Spring 1996): 275-303. [Britannia Mining Company, copper mining in British Columbia.]
- Shenk, Diana L. "The Light at the End of the Tunnel: The United Mine Workers of America Archive at Penn State." *Labor History* 37, no. 4 (Fall 1996): 510-515.
- Sprankla, L.R. "Population Characteristics of the White Pine Mining District: A Nineteenth Century Nevada Silver Mining Enclave." *Pennsylvania Geographer* 33, no. 2 (1995): 59-79.
- Spude, Robert L. "Looking Back at 'The Rush to the Rockies': Preserving Four 1860s Gold Camps." *Journal of the West* 35, no. 4 (October 1996): 7-17. [Virginia City, MT; Buckskin Joe, CO; Walker, AZ; and South Pass City, WY]
- Steeple, Douglas. "Calico Silver and the Fabric of Western Development." *Essays in Economic and Business History* 13 (1995): 141-156. [California's Mojave Desert, 1881-96.]
- Thompson, Gerald. "Henry de Groot and the Colorado River Gold Rush, 1862." *Journal of Arizona History* 37, no. 2 (Summer 1996): 131-148.
- Tonn, Mari Boor. "Militant Motherhood: Labor's Mary Harris 'Mother' Jones." *The Quarterly Journal of Speech* 82 (February 1996) 1-21.
- Unnever, James D., and Paulette Higgins. "Formal versus Substantive Justice: The Legislative History of the Surface Mining Control and Reclamation Act of 1977." *Capitalism, Nature, Socialism* 6 (September 1995): 77-90.
- Waite, Robert G. "To 'Idaho's Klondike': The Thunder Mountain Gold Rush." *Journal of the West* 35, no. 4 (October 1996): 65-73.
- Webb, George E. "The Chemist as Consultant in Gilded Age America: Benjamin Silliman, Jr. and Western Mining." *Bulletin for the History of Chemistry* 15/16 (1994).
- Workman, Michael Edward. "Political Culture and the Coal Economy in the Upper Monongahela Region [West Virginia], 1776-1933." Ph.D. diss., West Virginia University, 1995.
- Young, Bradley J. "Worshipping the 'Strange God': Fred T. Dubois and the Fight against Repeal in 1893." *Idaho Yesterdays* 38, no. 4 (1995): 2-11.
- Zajceck, Anna M. "Labor Activism and Industrial relations in the Coal-Mining Industries of the United States, Great Britain and Poland." Ph.D. diss., Virginia Polytechnic Institute and State University, 1995.
- Zhu, Liping. "Claiming the Bloodiest Shaft: The 1913 Tragedy of the Stag Canon Mine, Dawson, New Mexico." *Journal of the West* 35, no. 4 (October 1996): 58-64.

Thanks

Local arrangements for the 1997 are being coordinated by Erik and Jane Nordberg at Michigan Technological University in Houghton e-mail at copper@mtu.edu). They have been working at putting together a good mix of sessions, social activities and tours, and encourage MHA members to make the trek to the north country for what is sure to be a wonderful meeting. Erik is the University Archivist with the MTU Archives and has made presentations on Michigan-related topics at past MHA meetings.

Thanks are also due the program committee members. The chair, Duane Smith of Fort Lewis College, Durango, Colorado, and committee members, Lynn Langenfeld of Madison, Wisconsin and Clark Spence of Champaign, Illinois, have pulled together an engaging group of presenters and topics. Once again the number of papers submitted

has risen, and the confines of our day-and-a-half program are being pushed to the limit.

Thanks to Donors

The Seaman Mineralogical Museum and MTU Archives will supply refreshments at the joint opening reception on Thursday, June 5. A generous donation of funds from Inmet will underwrite the reception preceding Friday's awards banquet. Inmet owns Copper Range Company which operates the White Pine mine in Ontonagon County, Michigan.

Shafts and Adits

The Quincy Mining Company number two shaft descends to a maximum depth of 9200 feet on the incline, or a verticle depth of 6400 feet. Begun in 1860, East Adit at the mine is now used as an experimental mine by Michigan Tech's engineering school.

Association News

The nominating committee will convene in Houghton to discuss potential candidates for the fall election. If interested in serving or wish to nominate someone, please write Home Milford, chair, nominating committee, MHA, P. O. Box 150300.

The recent move of secretary Bob Spude to Santa Fe took longer than expected. Everything is up and running now, though. Jay Fell, treasurer, Lysa Wegman-French, council member, and Glenn Cook, membership committee chair have taken over reigns of the Denver functions. Please continue to mail your letters, membership dues, and other organizational matters to the Denver O. O. Box.

Newsletter submissions should now be sent to Bob Spude at 2 Alcalde Road, Santa Fe, NM 87505. Thanks to those who have sent items in the past. Look for the next newsletter in July.

Mining History Association

Post Office Box 150300
Denver, Colorado 80215

